

BioStation L2

Fingerprint IP Access terminal



Suprema BioStation L2 is an essential fingerprint terminal that provides comprehensive access control and time attendance features based on Suprema's next generation biometric technology and security platform. Designed for all type of time-attendance applications, BioStation L2 provides exceptional value by combining World's best Suprema fingerprint algorithm, high performance and enhanced security features.

BioStation L2

Fingerprint IP Access terminal

Features



Best-in-class Performance

- Latest Suprema algorithm
- 1.2GHz Quad-Core CPU
- Up to 150,000 matches per second (genuine)



Improved Accuracy & Security

- New advanced LFD (live finger detection) technique
- Improved OP5 optical sensor and algorithm



Expanded Capacity

- Max. 500k users / 1 million text logs
- Large memory: 2GB Flash + 256 MB RAM



Full Time Attendance Features

- 2-inch color LCD with intuitive GUI
- Full time and attendance functionality
- 3 x 4 numeric touch keypad



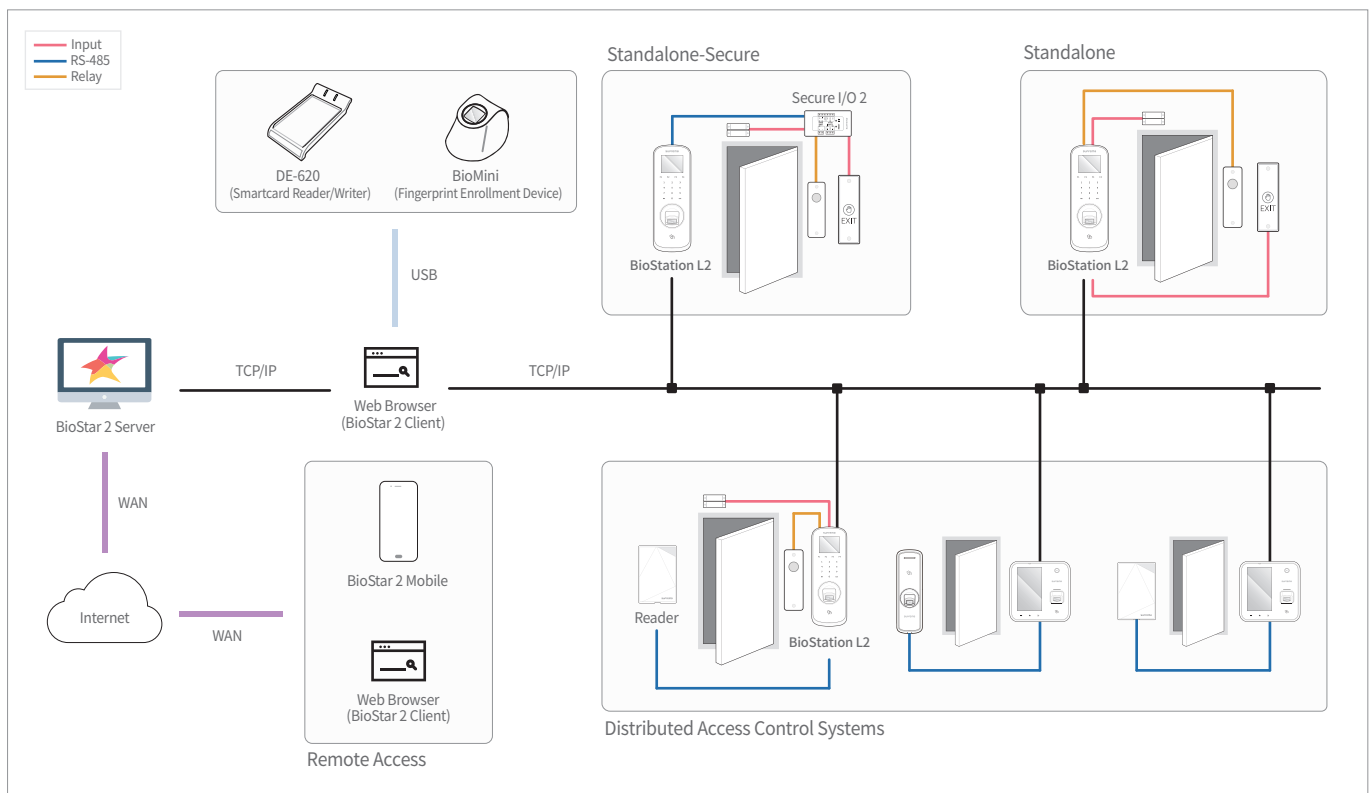
Versatile Interfaces / RF options

- Wiegand, RS485, TTL I/O, relay
- 125KHz EM
- 13.56 MHz Mifare / DESFire / DESFire EV1 / FeliCa / NFC

Specifications

Biometric	Fingerprint
Template	SUPREMA/ISO 19794-2/ANSI 378
Extractor / Matcher	MINEX certified and compliant
LFD	Supported
RF Option	125 KHz EM 13.56 MHz Mifare / DESFire / DESFire EV1 / FeliCa / NFC
CPU	1.2 GHz Quad-Core
Memory	2GB Flash + 256 MB RAM
Max. User	500,000 (1:1), 100,000(1:N)
Max. Template	1,000,000(1:1), 200,000(1:N)
Max. Logs	1,000,000(text)
LCD	2-inch color LCD
Sound	16-bit Hi-Fi
Ethernet	10 / 100 Mbps, auto MDI / MDI-X
RS-485	1ch host or slave (selectable)
Wiegand	1ch input or output (selectable)
TTL	2ch input
Relay	1 Relay
Tamper	Supported
Power	DC 12V
Operating Temperature	-20°C ~ 50°C (-4°F~ 122°F)
Operating Humidity	0% ~ 80%, non-condensing
Dimensions (WxHxD, mm)	71 x 201 x 44 (bottom) / 34 mm(top) (2.80" x 7.91" x 1.7"(bottom) / 1.34"(top)
Unit Weight	Device: 280g (0.62lb) Bracket: 61g (0.13lb) including washers/bolts
Certificates	CE, FCC, KC, RoHS, REACH, WEEE

System Configurations



Suprema Inc.

17F Parkview Tower, 248, Jeongjail-ro, Bundang-gu, Seongnam-si, Gyeonggi-do, 13554, Rep. of KOREA

Tel: +82 31 783 4502 | Fax: +82 31 783 4503 | Inquiry: sales@supremainc.com | www.supremainc.com

©2018 Suprema Inc. Suprema and identifying product names and numbers herein are registered trademarks of Suprema, Inc. All non-Suprema brands and product names are trademarks or registered trademarks of their respective companies. Product appearance, build status and/or specifications are subject to change without notice.

[AHL-BSL2-180110-03-EN]

Suprema
BIOMETRICS & SECURITY

Product Specifications

Category	Feature	Specification
Credential	Biometric	Fingerprint
	RF Option	<ul style="list-style-type: none"> BSL2-OE: 125kHz EM BSL2-OM: 13.56Mhz MIFARE, MIFARE Plus, DESFire/EV1, FeliCa, NFC
	RF read range*	MIFARE: 50 mm, DESFire: 50 mm, Felica: 30 mm
General	CPU	1.2 GHz Quad Core
	Memory	2GB Flash + 256 MB RAM
	LCD type	2" color TFT LCD
	LCD resolution	220 x 176 pixels
	Sound	16-bit Hi-Fi
	Operating temperature	-20 °C ~ 50 °C
	Storage temperature	-40 °C ~ 70 °C
	Operating humidity	0 % ~ 80 %, non-condensed
	Storage humidity	0 % ~ 90 %, non-condensed
	Dimension (W x H x D)	71 mm x 201 mm x 44 mm (Bottom) / 34 mm (Top)
	Weight	Device: 280 g Bracket: 61 g (including washers and bolts)
Certificates	CE, FCC, KC, RoHS, REACH, WEEE	
Fingerprint	Image dimension	272 x 320 pixels
	Image bit depth	8 bits, 256 grayscale
	Resolution	500 dpi
	Template	SUPREMA / ISO 19794-2 / ANSI 378
	Extractor / Matcher	MINEX certified and compliant
	LFD	Supported
Capacity	Max. User (1:1)	500,000
	Max. User (1:N)	100,000
	Max. Template (1:1)	1,000,000 (Two templates per finger)
	Max. Template (1:N)	200,000 (Two templates per finger)
	Max. Text Log	1,000,000
Interface	Ethernet	Supported (10/100 Mbps, auto MDI/MDI-X)
	RS-485	1 ch Master / Slave (Selectable)
	Wiegand	1 ch Input / Output (selectable)
	TTL input	2 ch Input
	Relay	1 Relay
	Tamper	Supported
Electrical	Power	Voltage: 12VDC Current: Max. 600 mA
	Switch input VIH	Min. 4 V Max. 5 V
	Switch input VIL	Max. 1 V
	Switch pull-up resistor	4.7 kΩ (The input ports are pulled up with 4.7 kΩ.)
	Wiegand output VOH	Min. 4 V Max. 5 V
	Wiegand output VOL	Max. 1 V
	Wiegand output pull-up resistor	Internal pull-up with 1 kΩ
	Relay	Voltage: Max. 30 VDC Current: 1A, Max. 2A

* RF read range will vary depending on the installation environment.